

**Mars II**

**Infrared Adapter Series**

**Reference Manual**

**CE FC**

# **Mars II**

## **Infrared adapter Series**

### **Introduction**

Thank you to purchasing the **Mars II** wireless Infrared products for your computer .  
The **Mars II** product enables computer users to transfer data back and forth to a desktop PC without any cables

### **Specification**

#### **Mars II 740 / Mars II 888**

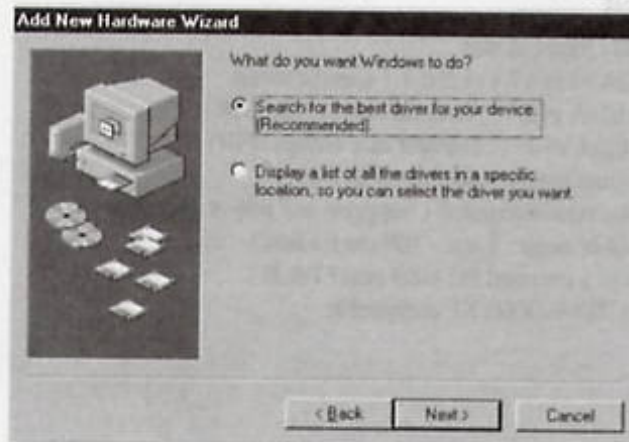
- . Meets IrDA v1.0, v1.1 , USB 1.1 specifications.
- . Supports IrDA v1.0 : Transfer rate 115.2k (SIR)  
IrDA v1.1 : Transfer rate 4Mbps (FIR)
- . Transmits and receives data up to 4Mbps
- . No external power required ( Supports self power operation)
- . Transmission range : 1 cm – 100 cm ( 3 feet )
- . Connects to a standard PC USB port ( P& P )
- . Windows 98/Me/2000/XP compatible

## Mars II 740 / Mars II 888

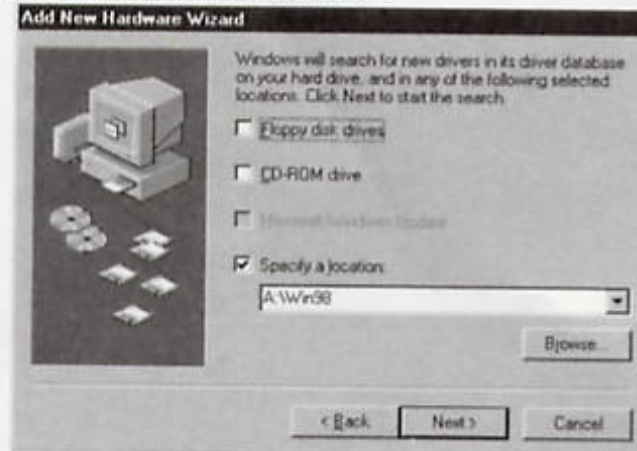
Plug the flat end of the USB cable (A type) into the USB hub or USB port located in the back of your computer, connect the other end (B type) into the USB-IrDA converter.

### Driver Install For Windows 98

1. Please insert the driver disk, the screen shows 'This wizard searches for new drivers for: IrDA/USB Bridge', please click 'Next' to continue
2. The screen shows 'What do you want Windows to do?', please select 'Search for the best driver for your device. (Recommended)', then click 'Next' to continue



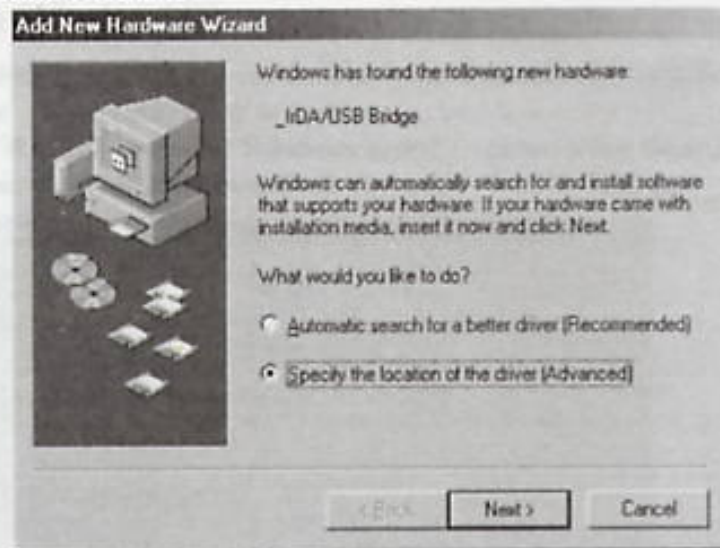
3. Screen shows 'Windows will search for new driver in its driver database on your hard driver, and in any of the following selected locations.' Please select 'Specify a location' and type 'A:\Win98' then click 'Next' to continue



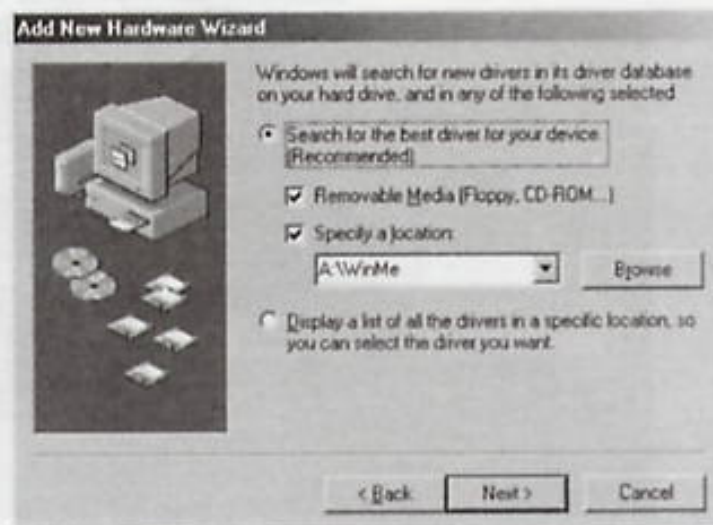
4. Screen shows 'Windows Driver file search for the device: SigmaTel USB-IrDA Dongle' Please click 'Next' to continue
5. Click 'Finish', then Windows has finished installing the device

## Driver Install For Windows Me

1. Insert the drive disk and select '**Specify the location of the driver (Advanced)**'  
Please click '**Next**' to continue



2. The screen shows '**Windows will search for new drivers in its driver database on your hard drive, and in any of the following selected**', please select '**Search for the best driver for your device (Recommended)**' and select '**Removable Media (Floppy, CD-ROM,...)**', then select '**Specify a location**' and type '**A:\WinMe**' in the blank



3. Screen shows 'Windows has found multiple software package that should work for this device', please select

'The updated software (Recommended) MR740USB-IrDA Dongle' (For MarsII 740)

or

'The updated software (Recommended) MR888USB-IrDA Dongle' (For MarsII 888)

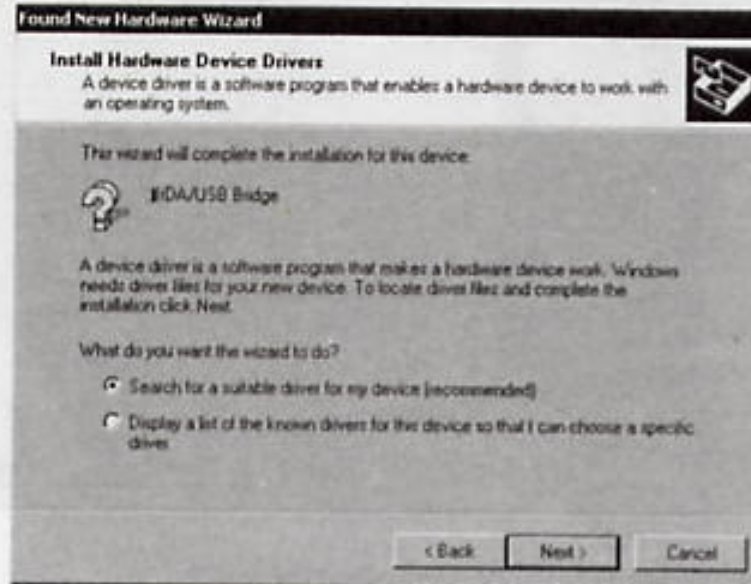


4. Click '**Finish**' Windows has finished installing the device.

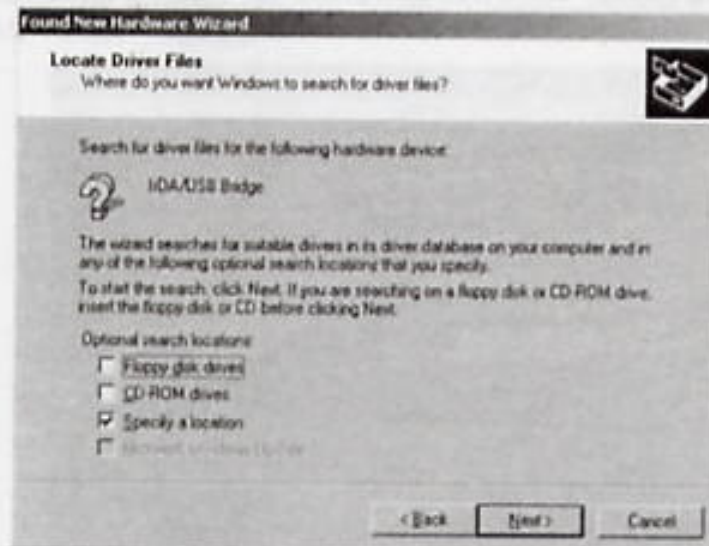
5. Restart the computer.

## Driver Install For Windows 2000

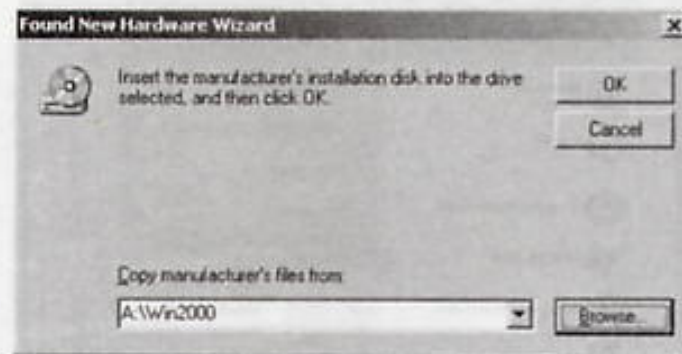
1. Insert the driver disk, the screen shows 'Welcome to the Found New Hardware Wizard' Please select 'Next'
2. The screen shows "This wizard will complete the installation for this device: IrDA/USB Bridge", please select 'Search for a suitable driver for my device (recommended)'



3. Screen shows 'Locate Driver Files, Where do you want Windows to search for driver Files?' Please select 'Specify a location'
4. Click "Next"



5. Screen shows "insert the manufacturer's installation disk into the drive selected, and then click OK" please type . "A:\Win2000"  
6. Click "OK"



7. Click "Next"

8. Click "Finish" windows has finished installation of the device

**All indicated copyrights and trademarks are the property of their respective**

## Driver Install For Windows XP

1. Go to My computer, and open "Properties"

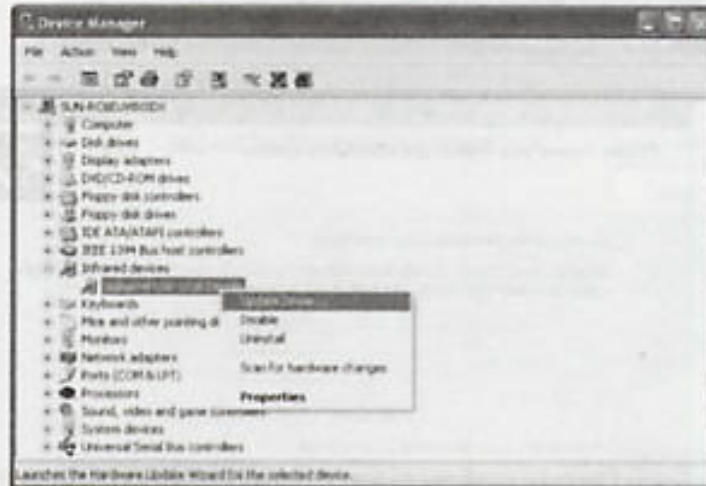


2. Under Properties, choose "Hardware", then select "Device Manager" as following.





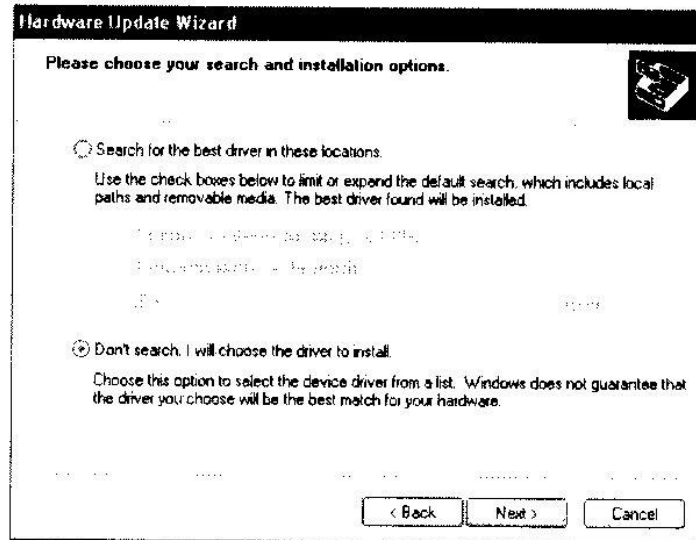
3. Choose **“Sigmatel USB-IrDA Dongle”** in the Infrared Devices, then select **“Update Driver”**



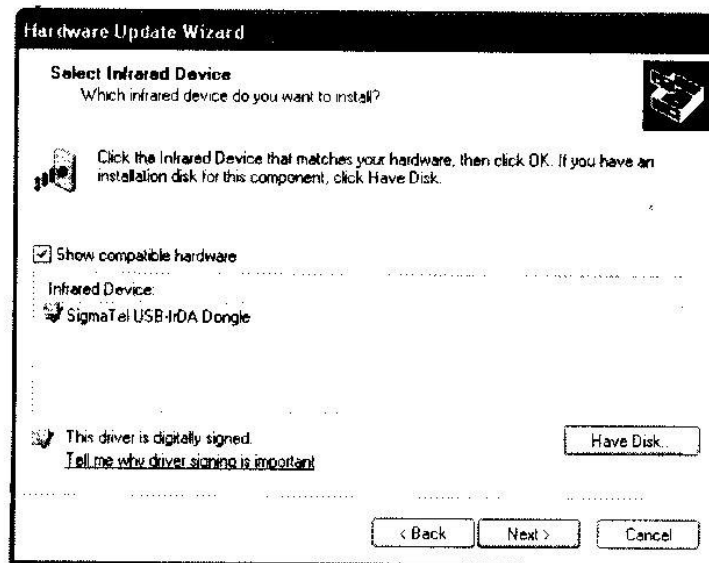
4. The Hardware Update Wizard is starting. Select **“Install from a list or specific location (Advanced)”**. Please insert the driver disk and then click **“Next”** to continue.



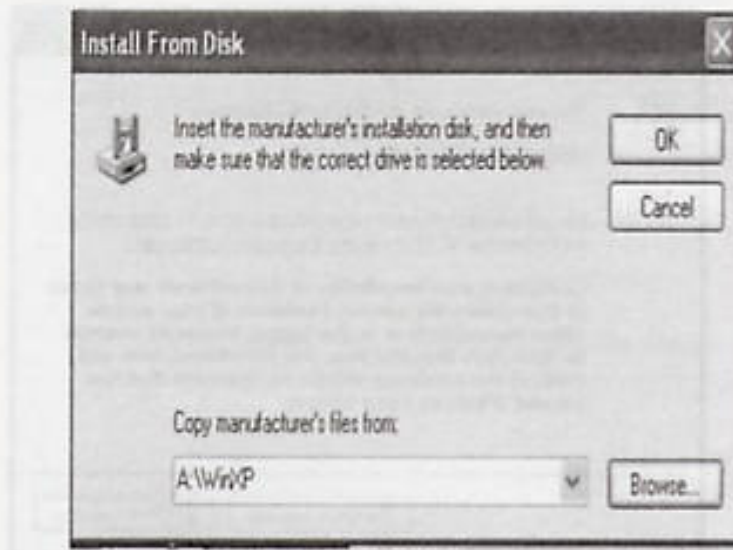
5. The screen shows **“Please choose your search & installation option”**. Please select **“Don’t search. I will choose the driver to install”**. Then, please click **“Next”** to Continue.



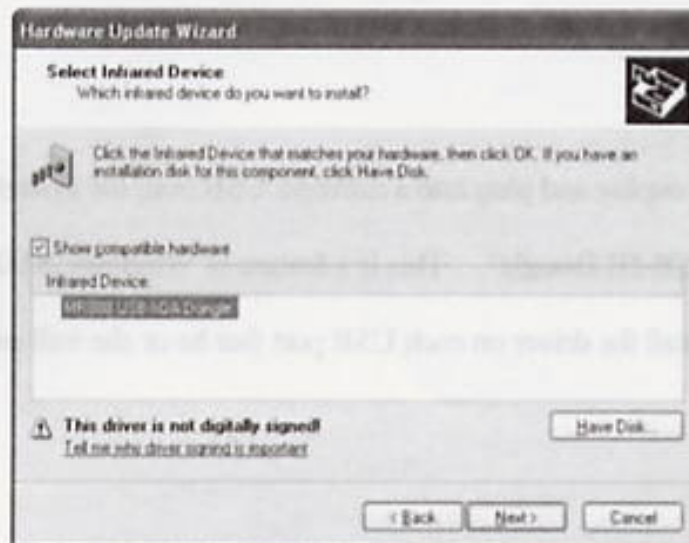
6. The screen shows **“select Infrared Device”**. Please choose **“Have Disk”**



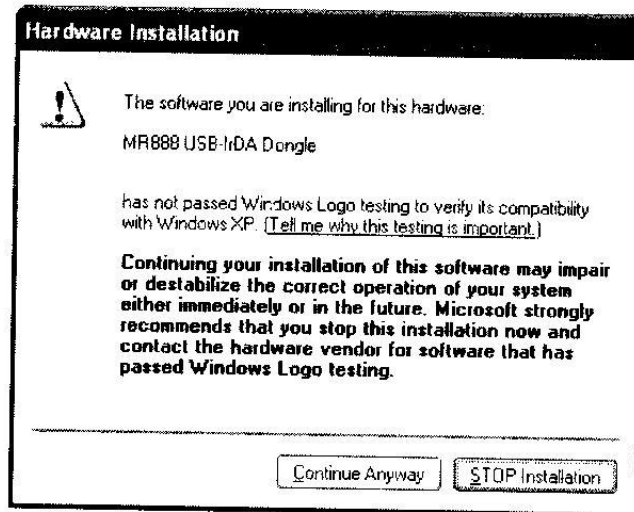
7. The screen shows **“Install from disk”**, please type **“a:\WinXP”**. Then, please click **“OK”** to continue.



8. In the **“Select Infrared Device”** wizard, the infrared device become **“MR740 USB-IrDA Dongle”** (For MarsII 740) or **“MR888 USB-IrDA Dongle”** (For MarsII 740) then click **“Next”** to continue.



9. There is a warning wizard is going to show up. Please choose “Continue Anyway”.



10. Please click “**finish**”, then the XP has finished installing the device.

Note: If users unplug and plug into a different USB port, the system will detect it as "SigmaTel USB-IR Dongle". This is a feature of Windows 2000 and Windows XP - users must install the driver on each USB port that he or she will use the device on.

---